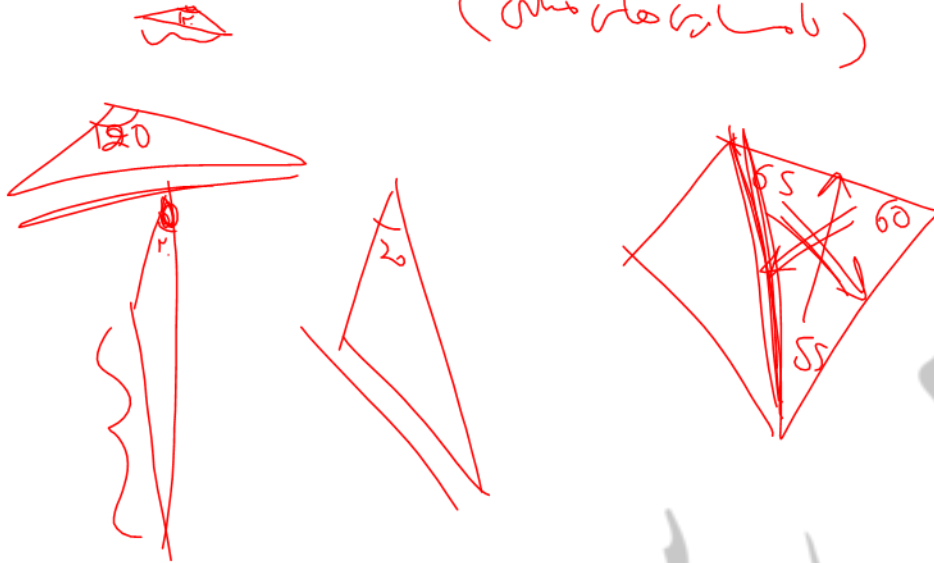


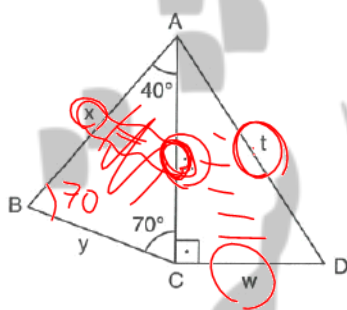
کلاسیک فصل ۷

(نامساوی مثلث)



مقایسه اضلاع دو مثلث

En kısa kenar hangisidir?  
Which side is the shortest?



$[AC] \perp [CD]$

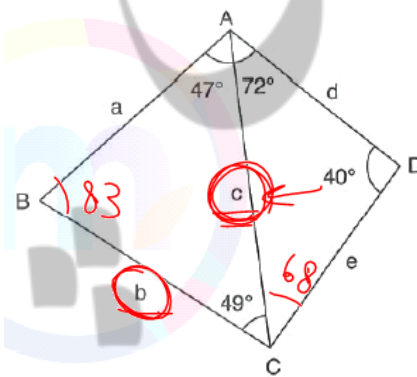
$m(\widehat{BAC}) = 40^\circ$

$m(\widehat{BCA}) = 70^\circ$

En uzun kenar hangisidir?

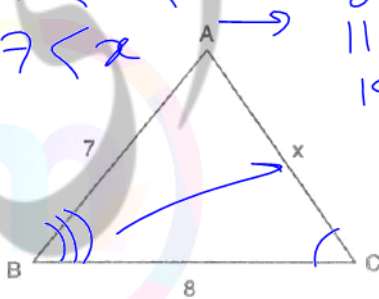
Which side is the longest?

- A) x    B) y    C) z    **D) t**    E) w



- A) a    **B) b**    C) c    D) d    E) e

$1 < x < 15$   
 $7 < x$



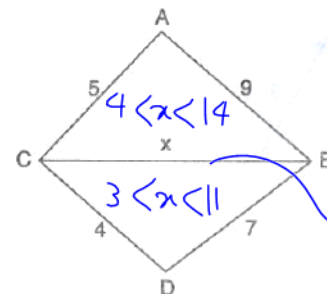
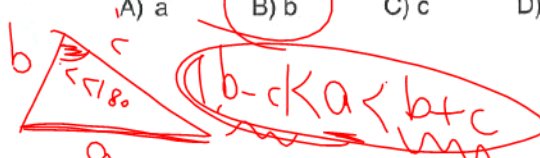
8 9 10  
11 12 13  
14

$m(\widehat{B}) > m(\widehat{C})$

x'in tanım aralığı nedir?

What is the definition range of x?

- A)  $1 < x < 7$     B)  $1 < x < 8$     **C)  $7 < x < 15$**   
D)  $8 < x < 15$     E)  $1 < x < 15$

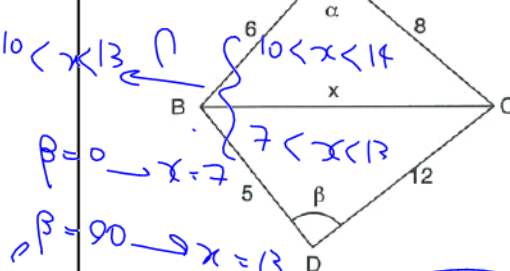


نامساوی مثلث  
x'in tanım aralığı nedir?  
What is the definition range of x?

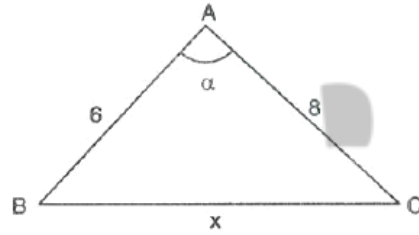
- A)  $9 < x < 11$     B)  $7 < x < 11$     C)  $3 < x < 11$   
D)  $5 < x < 14$     **E)  $4 < x < 11$**

شرط روی زاویه بین دو ضلع

$\alpha < 60$   $\alpha > 90 \rightarrow \alpha = 90$   
 $\alpha = 90 \rightarrow x = 10$   
 $\alpha = 180 \rightarrow x = 14$



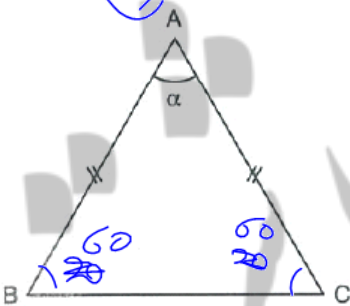
$\alpha > 90^\circ$   
 $\beta < 90^\circ$   
 x'in tanım aralığı nedir?  
 What is the definition range of x?



$\alpha < 90^\circ$   
 x'in tanım aralığı nedir?  
 What is the definition range of x?

- A)  $7 < x < 13$  B)  $10 < x < 13$  C)  $10 < x < 17$  D)  $8 < x < 12$  E)  $13 < x < 17$
- A)  $2 < x < 10$  B)  $6 < x < 8$  C)  $6 < x < 14$  D)  $10 < x < 14$  E)  $2 < x < 14$

$\alpha = 140$   
 $\alpha = 60$



$|AB| = |AC|$   
 $20^\circ < m(\widehat{B}) < 60^\circ$

$m(\widehat{BAC}) = \alpha$   
 $\alpha$ 'in tanım aralığı nedir?  
 What is the definition range of  $\alpha$ ?

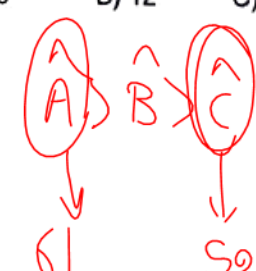
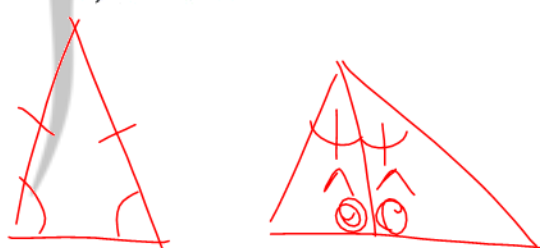
- A)  $60^\circ < \alpha < 140^\circ$  B)  $60^\circ < \alpha < 120^\circ$   
 C)  $40^\circ < \alpha < 140^\circ$  D)  $40^\circ < \alpha < 60^\circ$   
 E)  $40^\circ < \alpha < 120^\circ$

$a, b, c \in \mathbb{Z}$   
 $a < b$   
 $a - b + 4c = 45$   
 $\Rightarrow \max(c) = ? \text{ cm}$

$b - a < c$   
 $b - a = 11 < c = 14$   
 $14 - 3 = 11$

- A) 9 B) 12 C) 13 D) 14 E) 15

بازی با نامساوی ها (تحلیلی)  
 $14 < 17$   
 $11 < 14 < 17$



چقدر بدردتون می خوره